

venue info

page 2 introduction **page 3** ground plan **page 4** ground plan upper floor **page 5** general information & dimensions
page 6 power connection **page 7-9** impressions **page 10** location plan

introduction

Directly connected to Technikum is the impressive “handWERK” location. With unique lighting, an impressive spiral staircase, and around 150 square meters of space, it is the perfect venue for receptions and get-together events.

The location is situated directly in WERK13, providing the ideal setting for all kinds of events – from trade fairs and cultural events to exclusive business events.

The handWERK can only be rented in combination with the WERK7 theater or Technikum.

Would you like all services for your event to be provided quickly and easily from a single source? In this case, we would be happy to send you a customized event concept.

Catering

Food and beverage

Seating & decoration

e.g. row seating

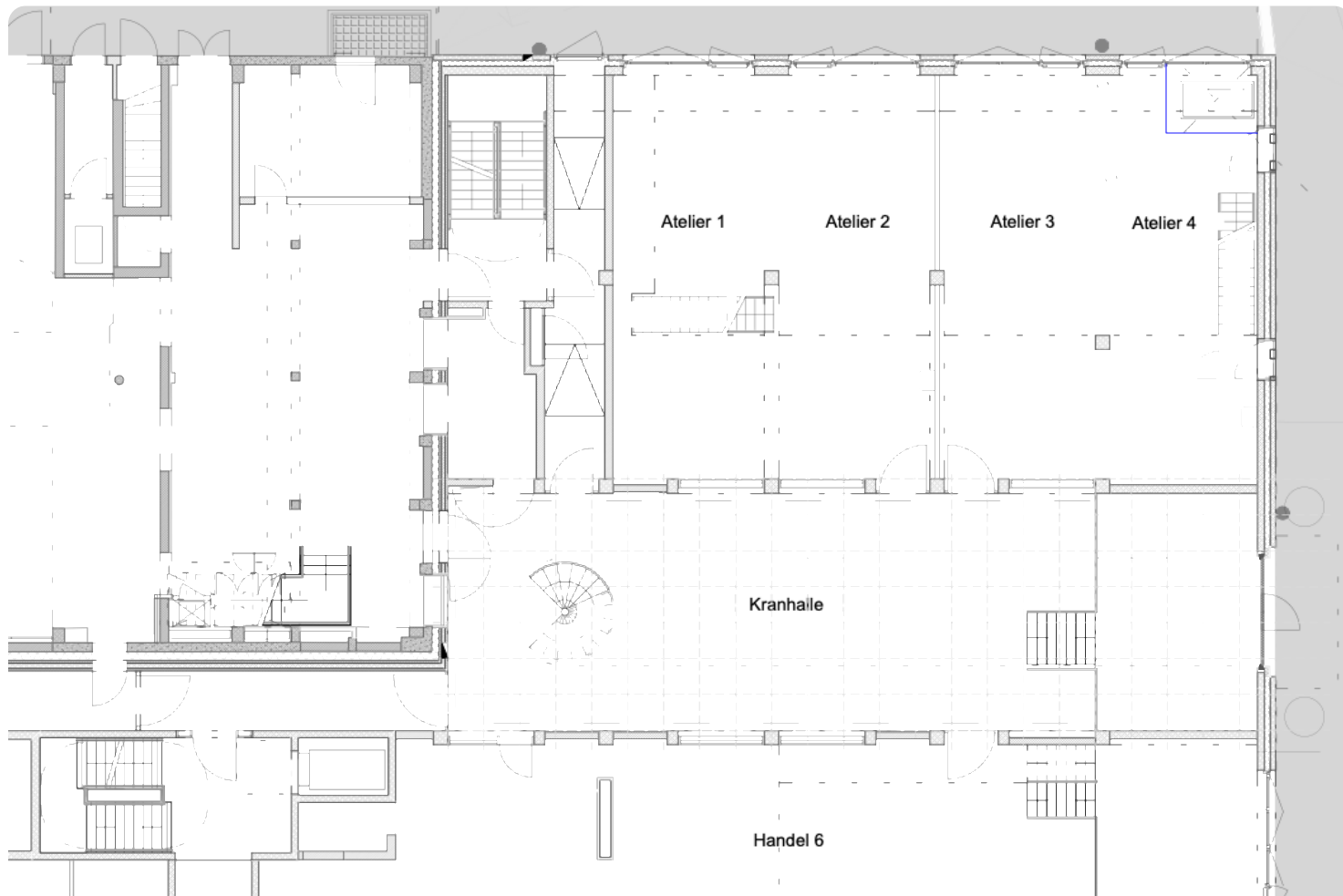
Personnel

Security and admission staff, bar and service staff, as well as cloakroom staff

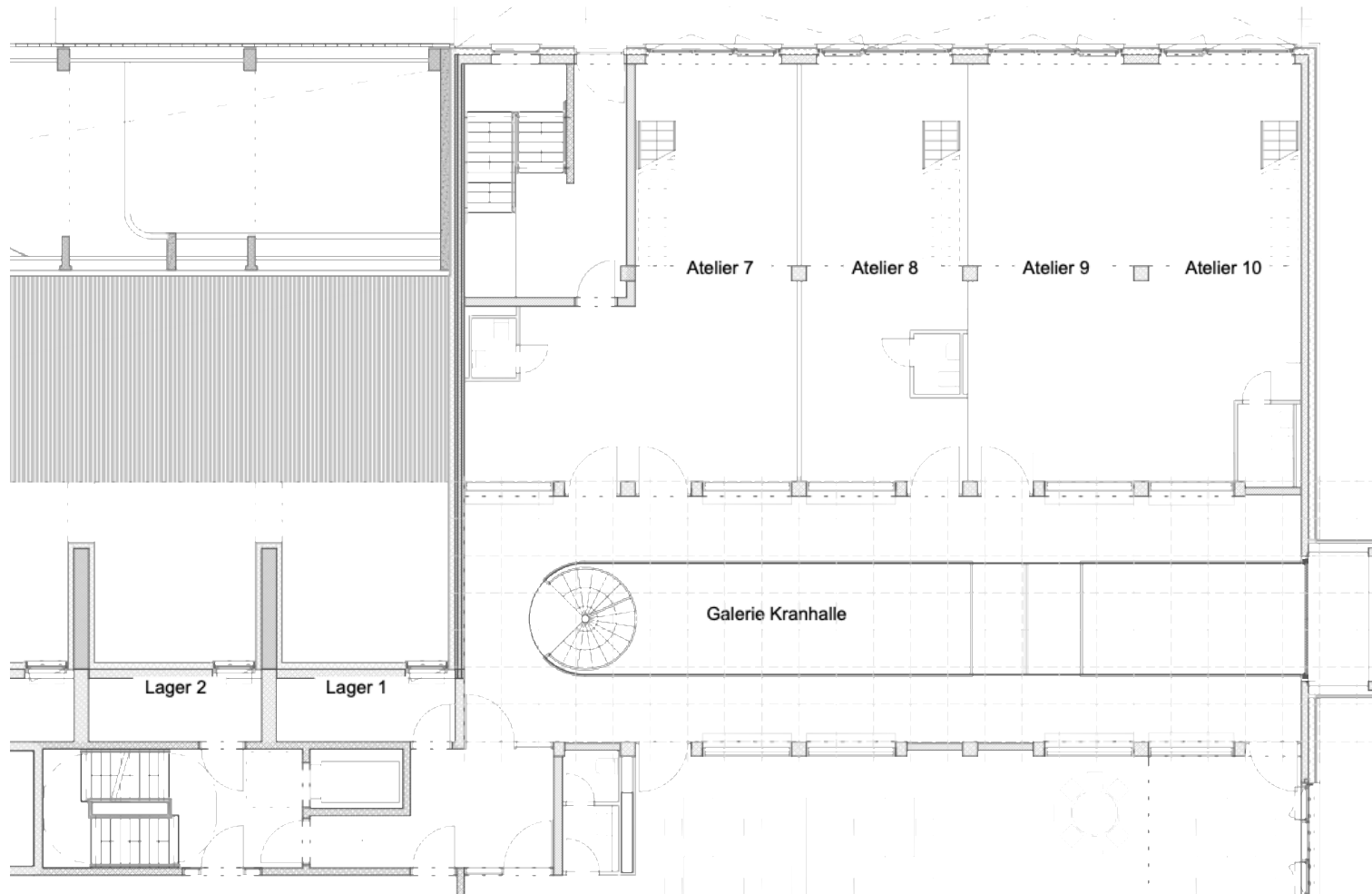
Graphic design services

e.g. posters, flyers, banners, wristbands, tickets, giveaways

ground plan



ground plan upper floor



general information & dimensions

Hall

Length	22.00 m
Width	6.00 m

Elevation (accessible via stairs)

Width	6.60 m
Depth	4.40 m
Height	1.30 m

Doors

Access Technikum	Width	1.30 m
	Height	2.46 m
Access WERK7 theater	Width	1.25 m
	Height	2.46 m

Capacity

Unseated	100 PAX
----------	---------

Work devices

Forklift	Load capacity max.	1.860 kg
	working height	4.95 m
	Drive type	electric

Articulated telescopic platform	Working height	15.00 m
---------------------------------	----------------	---------

Ladders on request

Wi-Fi Bandwidth

max. Download	20 mbit/s
max. Upload	20 mbit/s

power connection

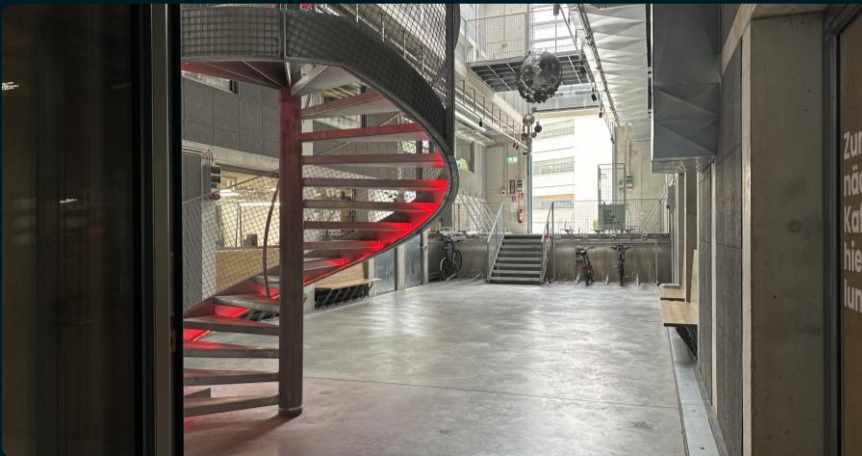
Hall

1x CEE 16A / 400 V
1x CEE 32A / 400 V
2x SCHUKO 16A / 230 V
2x SCHUKO 16A / 230 V
(2x RJ45 2-fach)

Balcony

1x CEE 16A / 400 V
1x CEE 32A / 400 V
3x SCHUKO 16A / 230 V

impressions – exterior & interior view



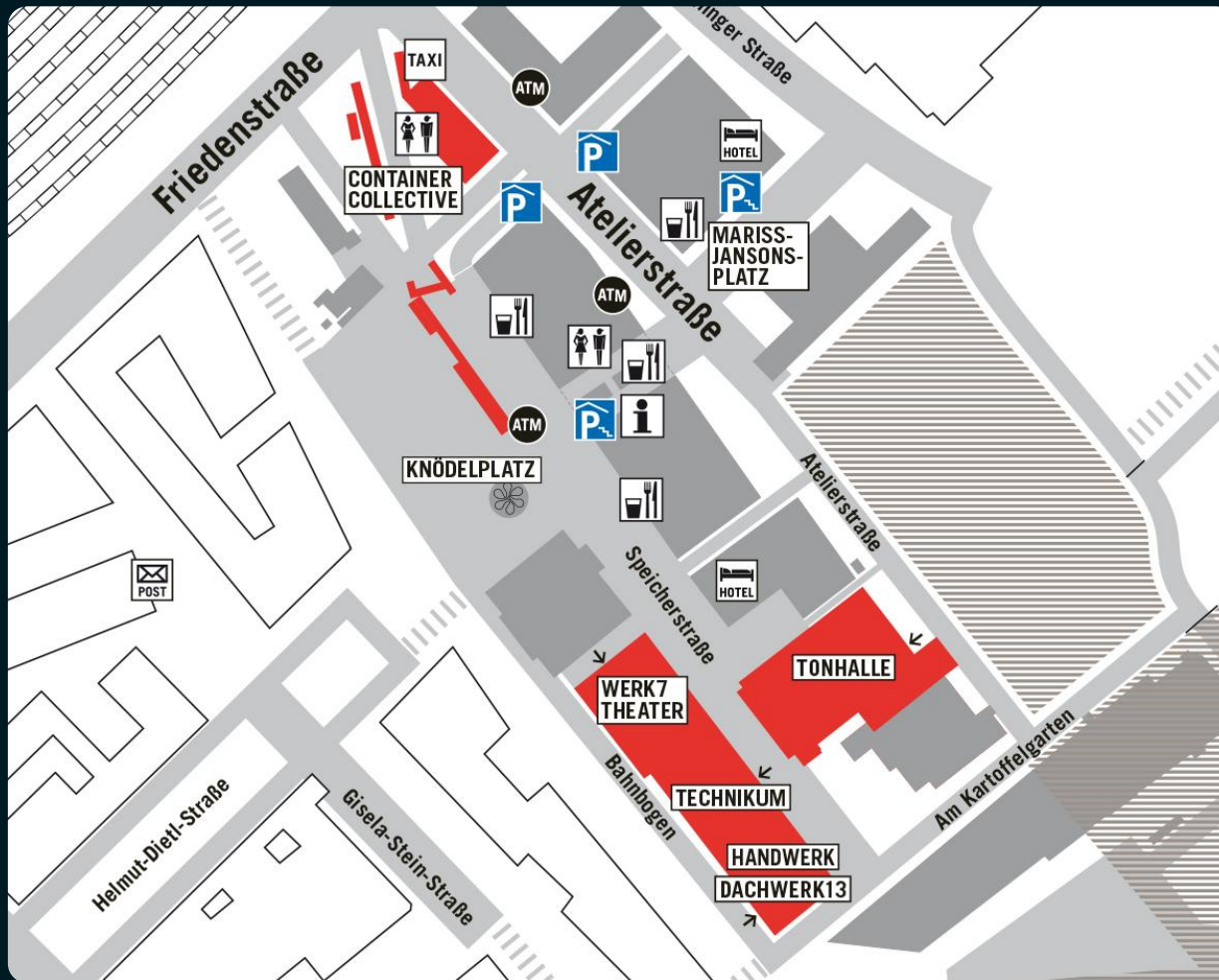
impressions – entrance WERK7 theater/Technikum



impressions – conference, meeting & catering



location plan



Werkviertel-Mitte is located directly between Haidhausen and Berg am Laim in Munich East.


Thanks to its proximity to the Munich East Station the site is optimally connected with regional and national transportation.

Only three stations to Munich Central Station and first class connection to downtown as well as to highways offer time-saving comfort.

Same applies to short routes to industrial fairs and Munich airport.



**your event agency
in werksviertel-mitte**

eventfabrik münchen gmbh atelierstraße 1 81671 münchen
mail event@eventfabrik-muenchen.de **web** eventfabrik-muenchen.de  [/eventfabrikmuenchen](https://www.instagram.com/eventfabrikmuenchen)