



venue info

page 2 introduction **page 3** total ground plan **page 4** general information **page 5** power & water connection
page 6 loading details for underground parking garage **page 7-11** impressions **page 12** location plan

introduction

There is nothing like this particular open-air area.

Located in the middle of Werksviertel and surrounded by architectural buildings like gastronomic businesses, Knödelplatz is inviting you wholeheartedly and is ideal for concerts, roadshows, fair trades, exhibitions and presentations of all kind.

Expanding or extending the area from Speicher street and Atelier street to Container Collective or Mariss Jansson square is always possible.

Would you like all services for your event to be provided quickly and easily from a single source? In this case, we would be happy to send you a customized event concept.

Catering

Food and beverage

Seating & decoration

Theater or mixed seating arrangements and many more

Technical & conference equipment

Light and sound system as well as general stage equipment, power connections or infrastructure, open-air stage including roof

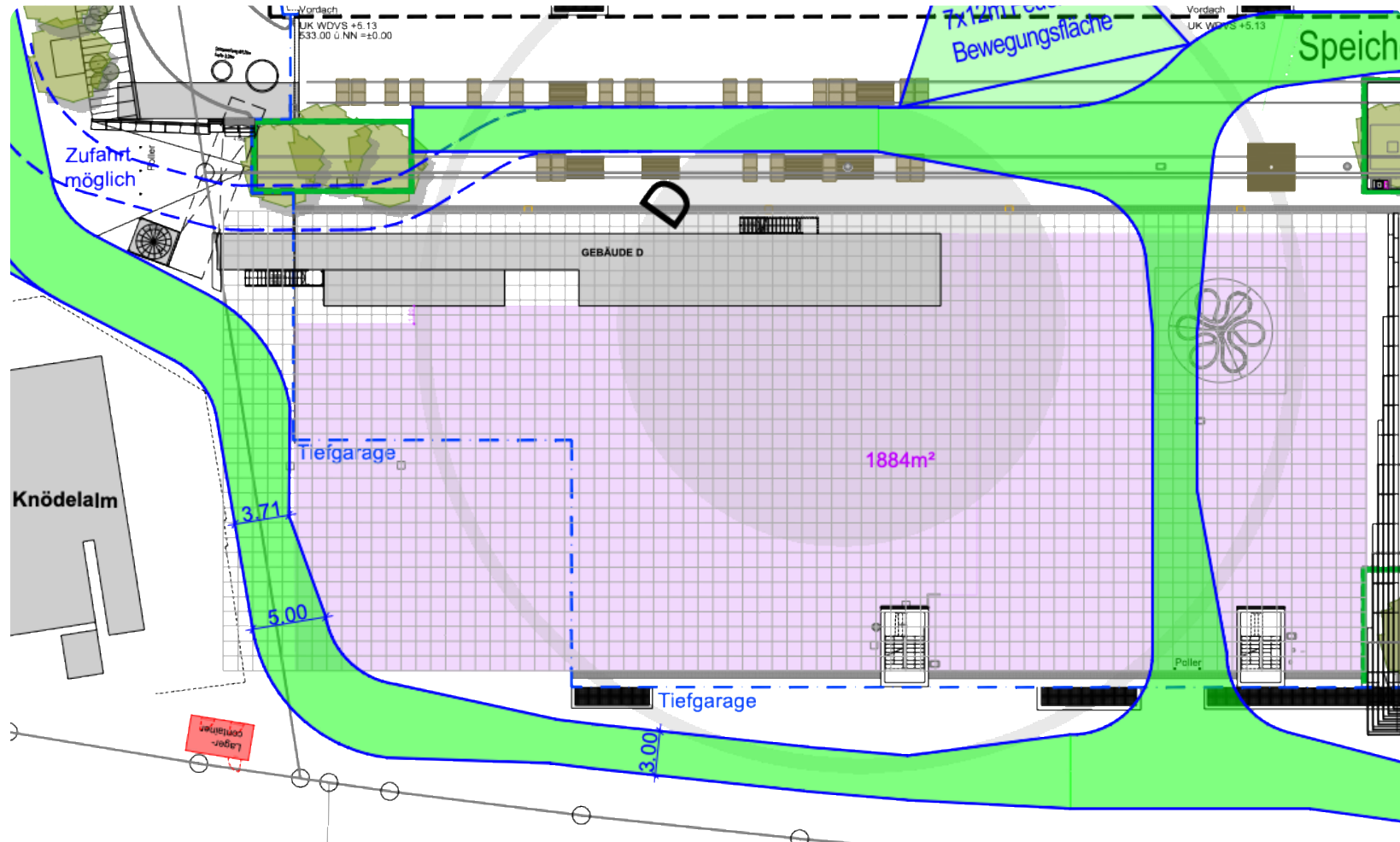
Personnel

Security, bouncer, bartender and service staff

Graphic design service

Ground plan, posters, flyers, banner, wristbands, tickets and giveaways and many more

total ground plan



general information

Dimensions

Area	1,884.00 m ²
Length	72.00 m
Breadth	24.00 – 26.00 m
Height	open

Capacity

No seating	up to 3,700 PAX.
------------	------------------

Driveway

Breadth	min. 3.50 m
Height	min. 6.00 m, depending on access

Work equipment

Forklift	Load capacity	max. 1,860 kg
	Operating height	4.95 m
	Drive type	electric

Aerial work platform	
	Operating height 15.00 m

Ladders on request

W-LAN bandwidth

max. download	20 mbit/s
max. upload	20 mbit/s

power & water connection

5 x floor box small

- 1 x CEE32A
- 1 x CEE16A
- 1 x Schuko plug 16A

1 x power distributor

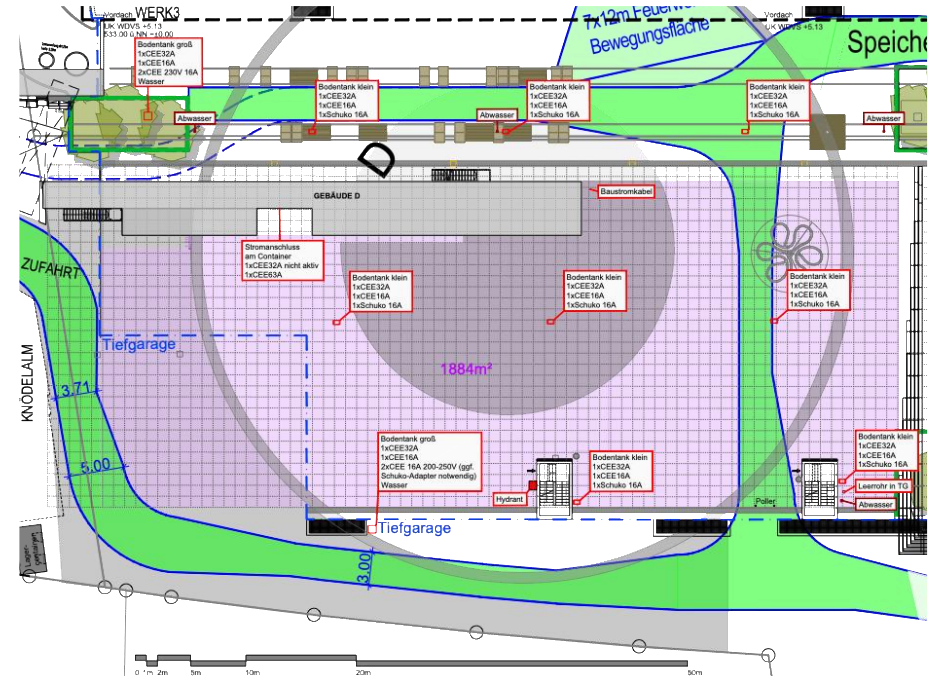
- 1 x CEE32A
- 1 x CEE16A
- 5 x Schuko plug 16A

1 x floor box large

- 1 x CEE32A
- 1 x CEE16A
- 2 x Schuko plug 16A
- 1 x Water connection

2 x permanent power connection

- 1 x CEE63A
- 1 x CEE32A not accessible to us

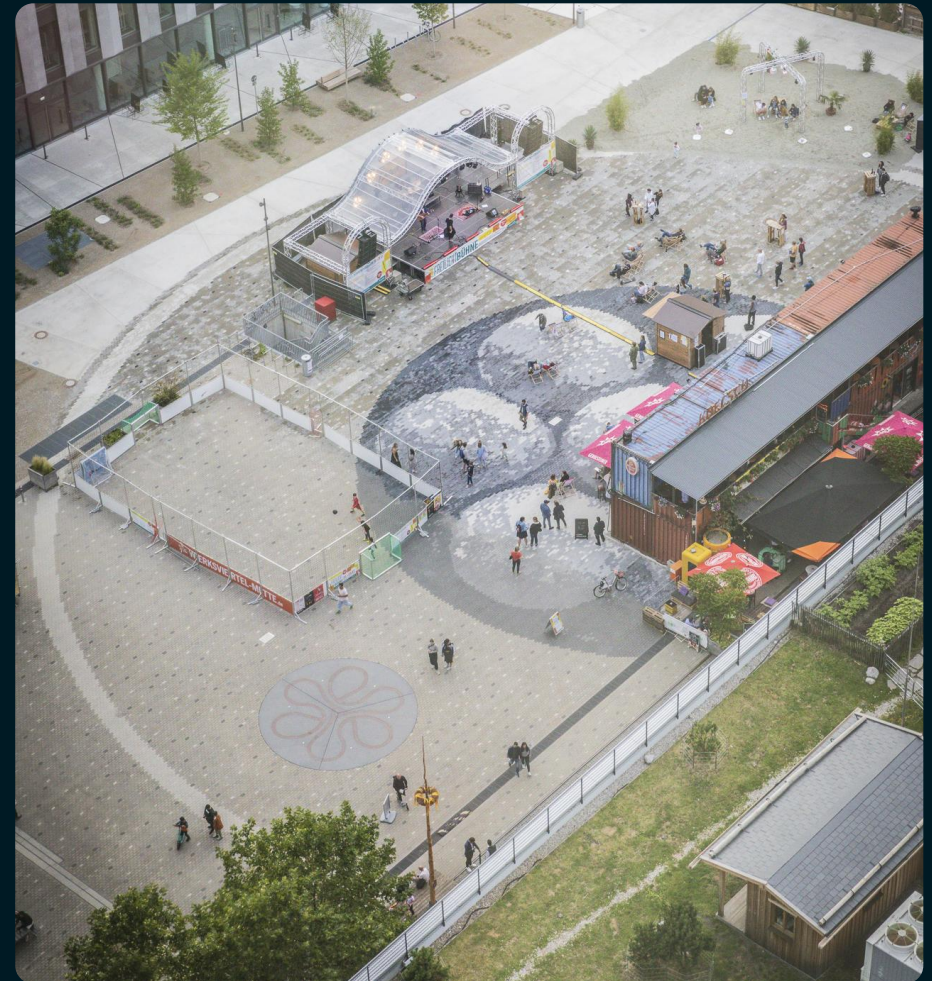


Driving heavy trucks on top level of underground garage permitted.
Above basement ceiling of underground car park WERK3 – traffic load $16,7 \text{ kN/m}^2$ (except in the area above WERK12 cellar).
For vehicles > 30 t, the following requisites must be met:

- the axle weight of the vehicle do not exceed 10 tonnes
- the distributed load (total weight / vehicle dimension) is less than 1.67 t/m^2 (16.7 kN/m^2)
- heavy goods vehicle on the ceiling only at walking speed permitted.

Please note: When setting up a mobile crane on the exterior walls of the underground car park, the supports must be exactly above the exterior walls in order to avoid horizontal loads. No support allowed on shafts and shaft walls.

impressions – top views & festival ambience



impressions – top views & festival ambience



impressions – festival and event ambience



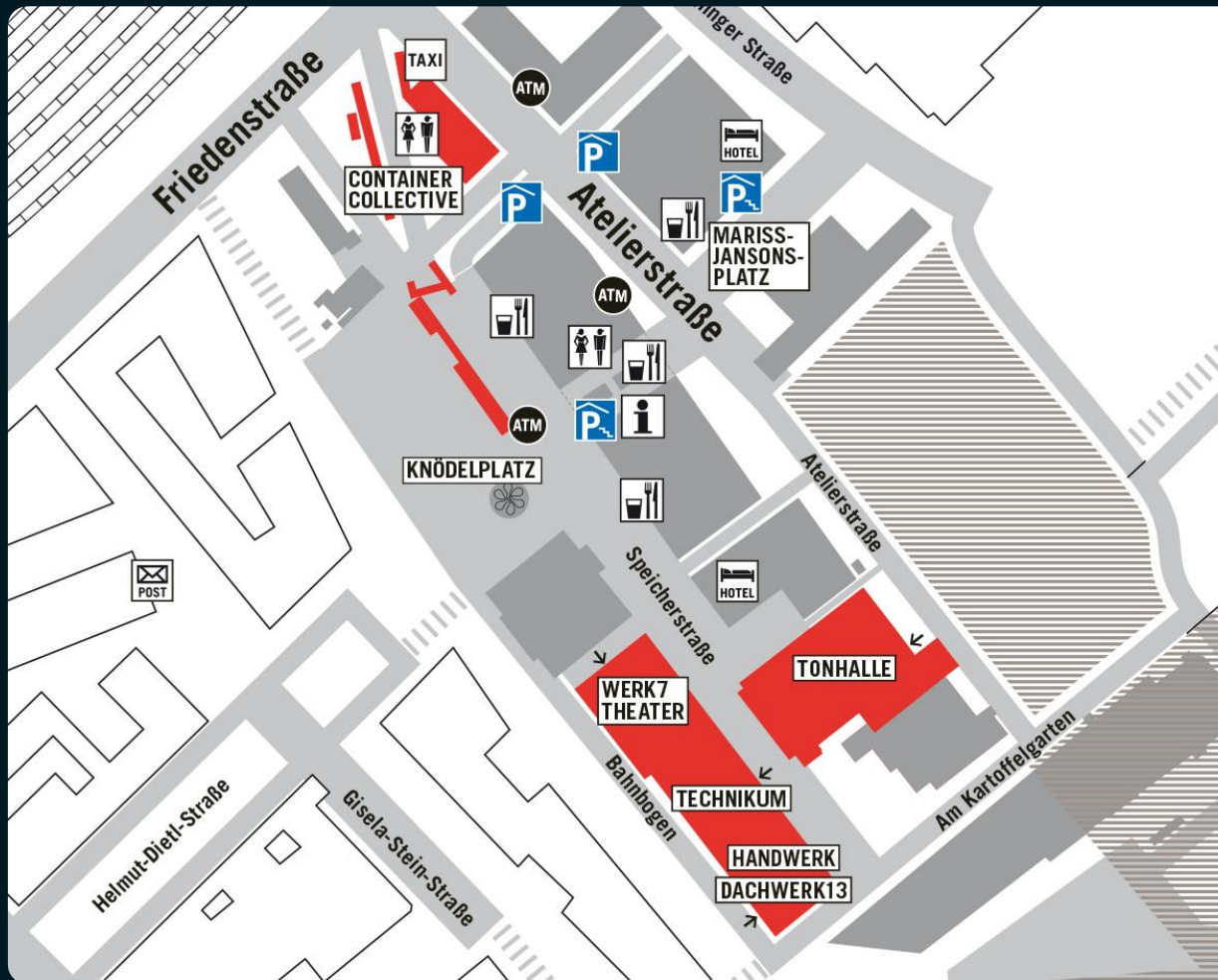
impressions – festival and event ambience



impressions – festival and event ambience



location plan



Werksviertel-Mitte is located directly between Haidhausen and Berg am Laim in Munich East.


Thanks to its proximity to the Munich East Station the site is optimally connected with regional and national transportation.

Only three stations to Munich Central Station and first class connection to downtown as well as to highways offer time-saving comfort.

Same applies to short routes to industrial fairs and Munich airport.



**your event agency
in werksviertel-mitte**

eventfabrik münchen gmbh atelierstraße 1 81671 münchen
mail event@eventfabrik-muenchen.de **web** eventfabrik-muenchen.de  [/eventfabrikmuenchen](https://www.instagram.com/eventfabrikmuenchen)