



WERK7 theater

a location of

eventfabrik

Venue info

[page 2](#) introduction [page 3](#) ground plan [page 4](#) general information [page 5](#) dimensions [page 6](#) electrical outlets
[page 7-8](#) backstages [page 9-11](#) impressions [page 7](#) location plan

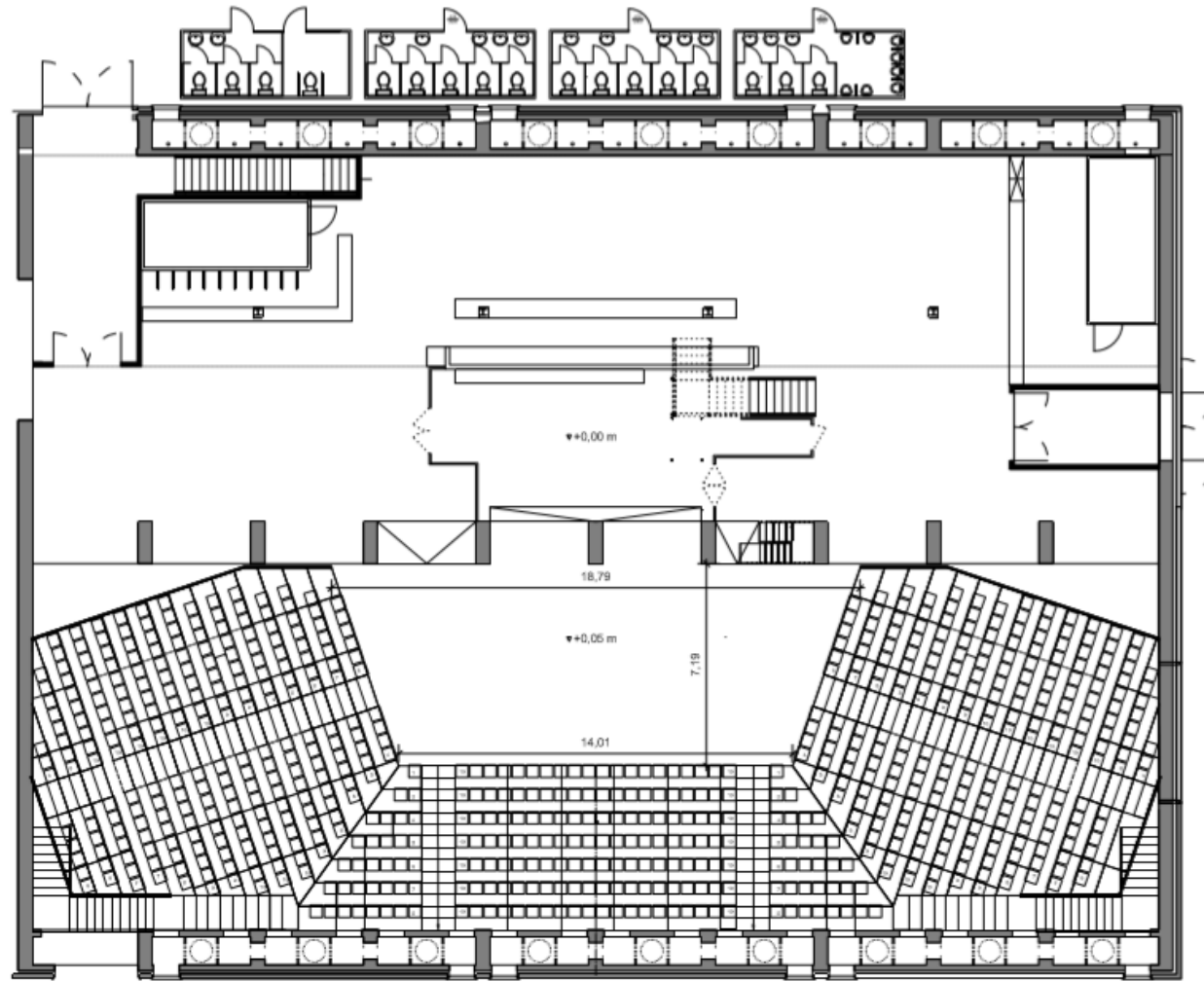
WERK7 theater presents an exceptional scenery: apart from a fantastic character there is a breathtaking grandstand, which makes it a perfect home for concerts, theater and industrial events.

Become a guest in new Werksviertel-Mitte and get inspired from former Pfanni potato warehouse.

Would you like all services for your event go uncomplicated and quickly from one source? In this case, let us make you a pitch perfect event plan for you.

- ✦ **Catering**
Food and beverages
- ✦ **Seating & decoration**
Fixed seating
- ✦ **Technical & conference equipment**
Light and sound system as well as presentation equipment and conference tools (flipcharts, whiteboards)
- ✦ **Personnel**
Security and bouncer, bartender and service staff as well as cloakroom attendant
- ✦ **Graphic design service**
Posters, flyers, banners, wristbands, tickets, give-aways and many more

Please note that you are obliged to rent the event equipment in WERK7 theater.



*for events with video projection from 120° restricted view

Dimensions	<p>Area: Hall 520.79 m²; foyer 325.46 m² Length: 28.00 m Breadth: 40.00 m Height: 10.10 – 10.35 m</p>
Capacity	Granstand seating up to 682 PAX
Stage area	10 x 5.50 m
Doors	<p>Breadth: max. 2.40 m Height: max. 2.09 m</p>
Work equipment	Fork lift, aerial work platform and ladders on request
WLAN bandwidth	<p>max. download: 200 mbit/s max. upload: 200 mbit/s</p>

Floor area

Auditorium	345.92 m ²
Stage	55.00 m ²
Backstage	46.00 m ²
Foyer	325.46 m ²

Hall

Length	13.01 m
Breadth	40.03 m
Height	10.10 m – 10.35 m

Foyer

Length	33.76 m
Breadth	14.82 m

Stage

Breadth	10.00 m
Depth	5.50 m

Artists' balcony

Height	2.67 m
Area	35.08 m ²

Door for loading

Breadth	2.40 m
Height	2.09 m
Route for loading	15.00 m to the stage, ground level

Stage

Light / Sound 1x 125 A CEE // in-house

Diverse 1x 63 A CEE // in-house
 2x 32 A CEE // in-house
 2x 16 A CEE // in-house
 6x Schuko 16 A // in-house

FOH

Diverse 1x Schuko 16 A // in-house
 1x 32 A CEE // freely available

Artists' dressing room 1

14.28 m²

6 makeup mirror with chairs

Artists' dressing room 2

15.82 m²

5 makeup mirror with chairs

Artists' dressing room 3

18.34 m²

5 makeup mirror with chairs

Artists' dressing room 4

14.29 m²

5 makeup mirror with chairs

Solo cloakroom (S)

10.53 m²

Production office (P)

18.61 m²

Costumes/ masks (K/M)

23.82 m²

2 makeup mirror with chairs

Sanitary area ladies (D)

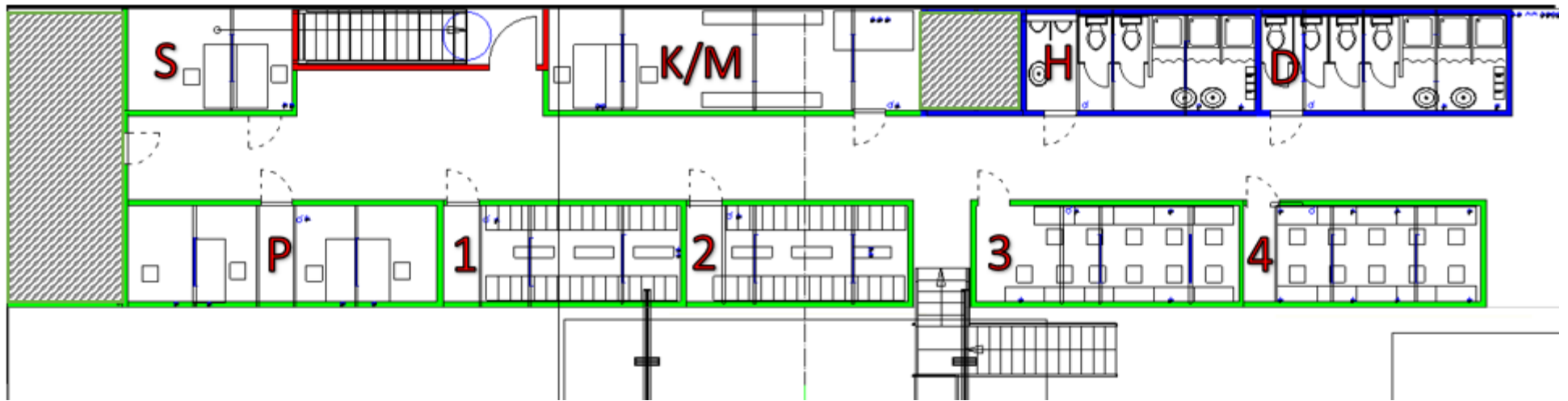
14.74 m²

4x WC, 3x shower, 2x basin

Sanitary area gentlemen (H)

13.76 m²

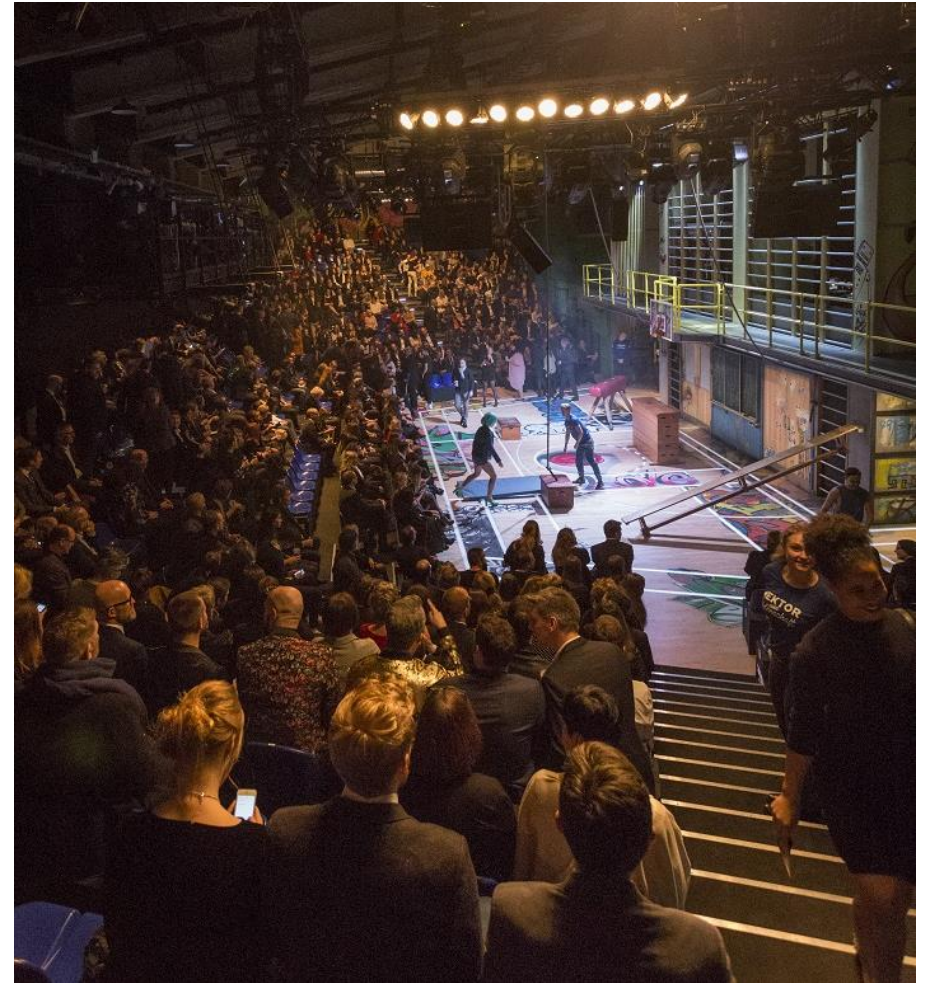
2x WC, 2x pissoir, 3x shower, 3x basin

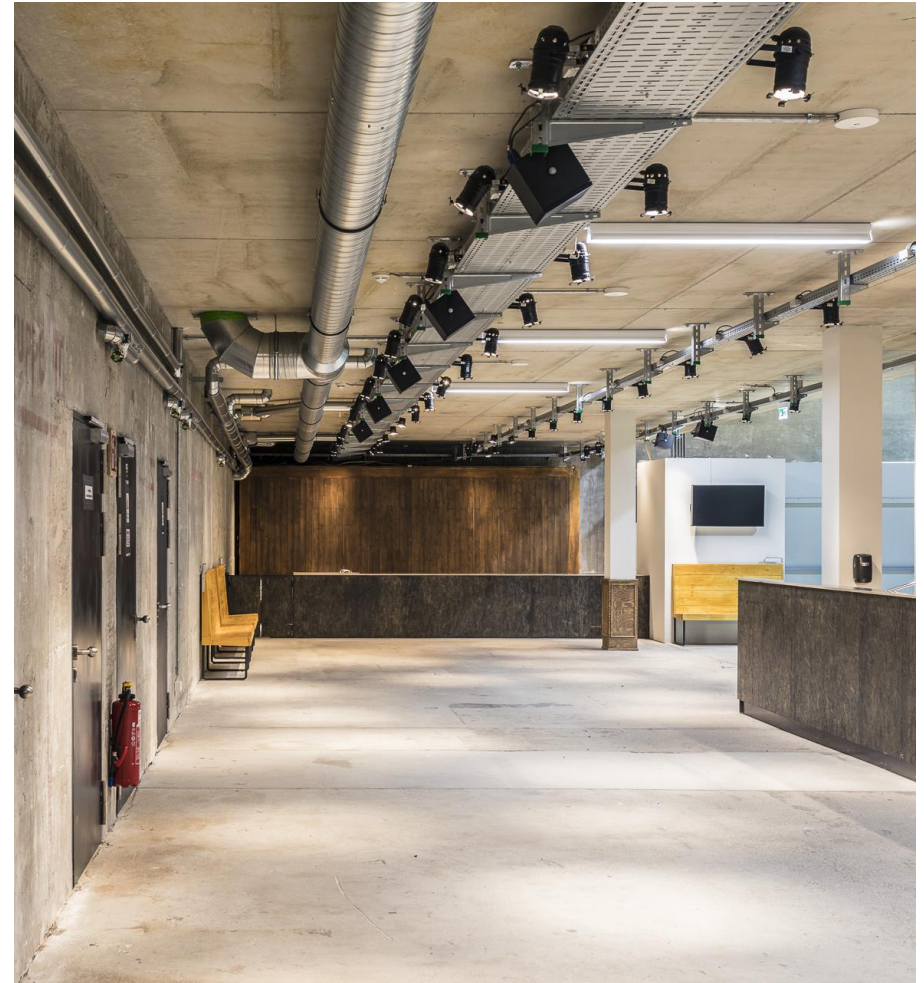
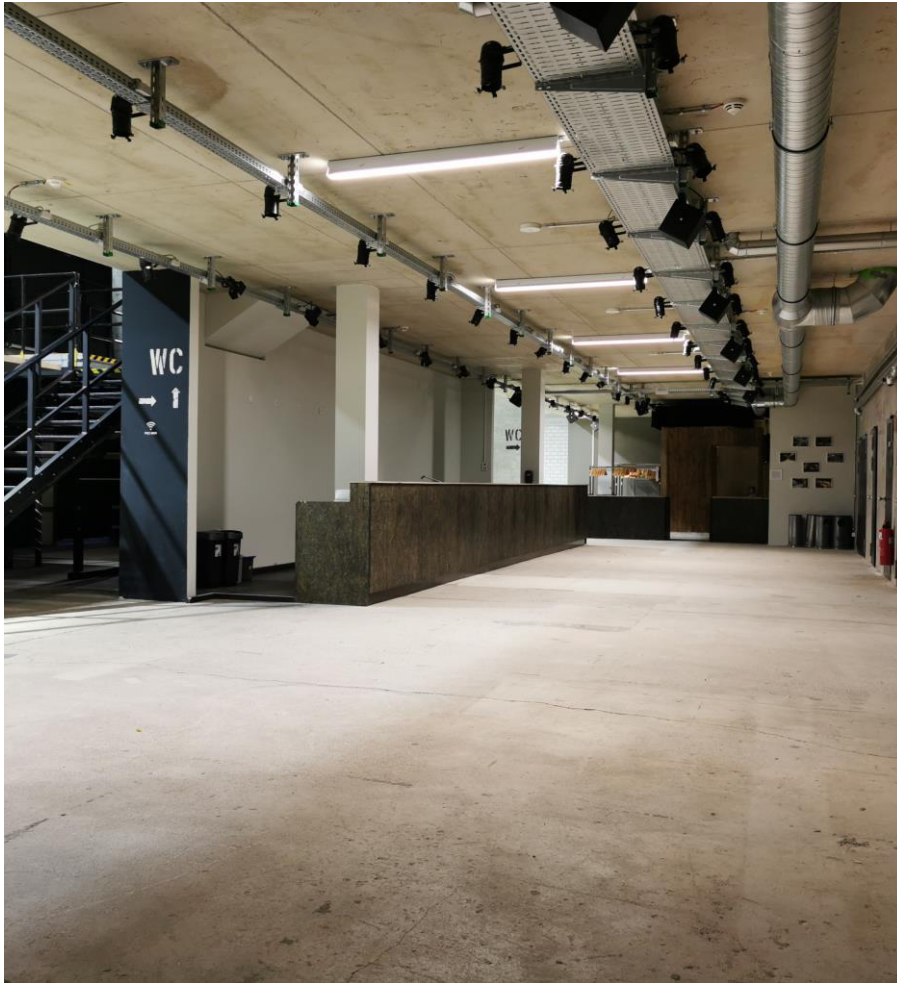


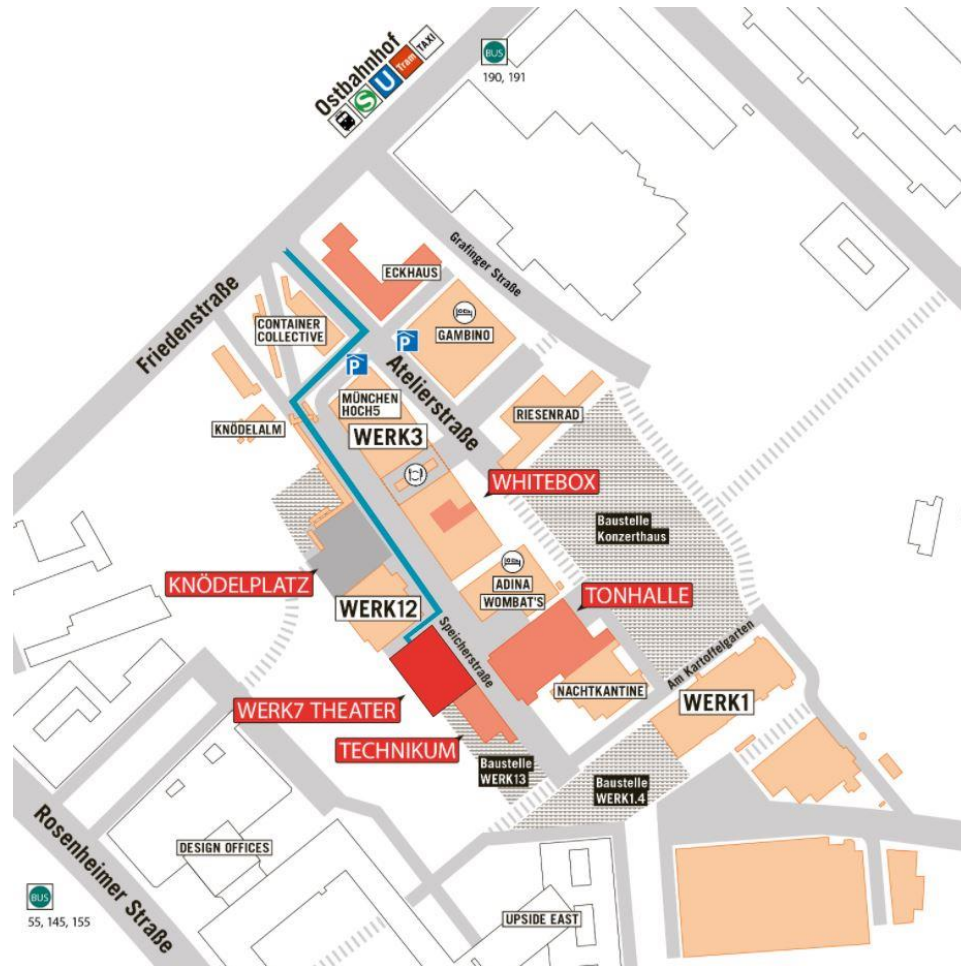




Fotos: KWiucha; 2018







Werkviertel-Mitte is located directly between Haidhausen and Berg am Laim in Munich East.

Thanks to its neighbor of Munich East Station the site is optimally connected with regional and national transportations.

Only three stations to the central Munich and first-class connection to the downtown as well as to highways offer us time-saving comfort.

Same applies to short routes to industrial fairs and Munich airport.



eventfabrik

münchen gmbh

**your event agency
in werksviertel-mitte**

eventfabrik münchen gmbh atelierstraße 1 81671 münchen
Tel: +49 (0)89 628344 – 411 Mail: info@eventfabrik-muenchen.de Web: eventfabrik-muenchen.de