



## Venue info

[page 2](#) introduction [page 3](#) floor plan [page 4](#) general information [page 5](#) dimensions [page 6](#) power connections  
[page 7](#) side rooms [page 8](#) work equipment [page 9-12](#) impressions [page 13](#) map of area

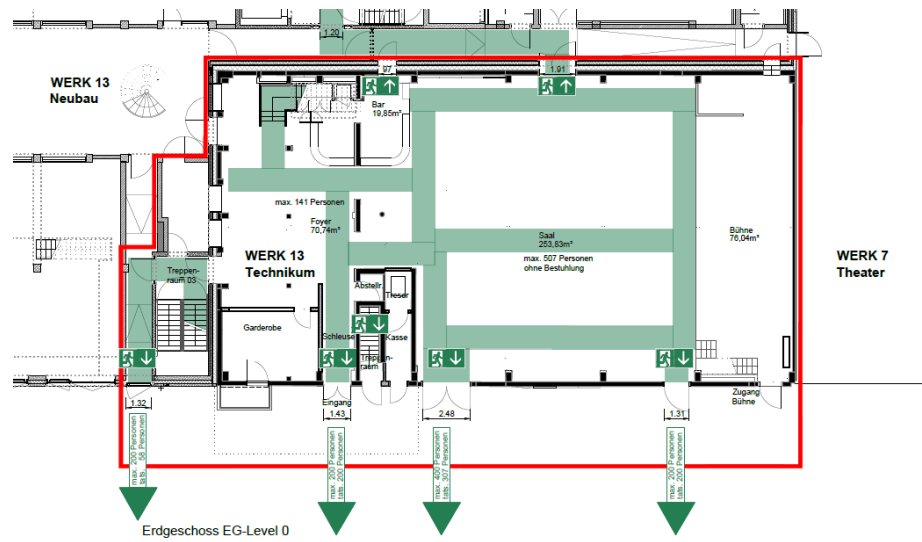
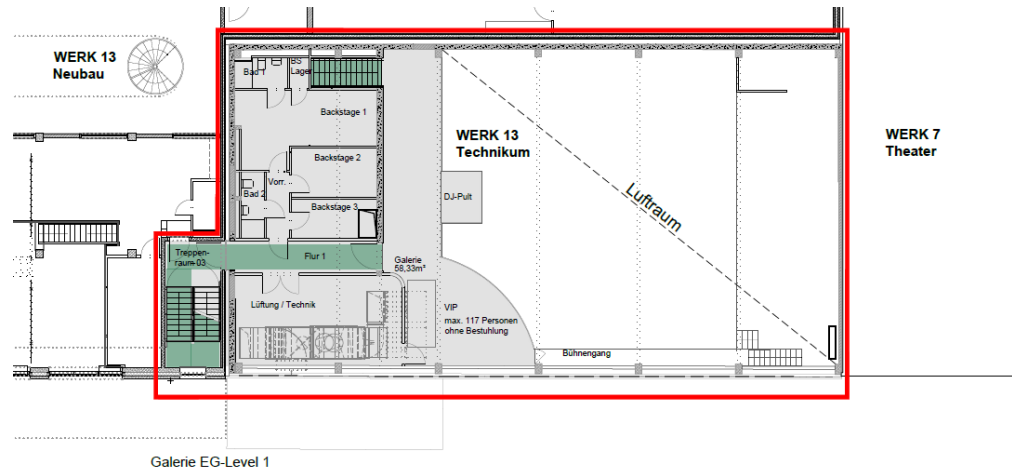
Technikum is located where Pfanni's various products were tried and tested.

The location lies right behind TonHalle and is ideal for all types of occasions from trade fairs to cultural events.

We'd be happy to give you a full package deal with all requested services, coordinated and organized by us, so that it is as uncomplicated and easy as possible for you. We take pride in making exceeding your event expectations.

- ✦ **Catering**  
Food & beverage
- ✦ **Seating & decoration**  
Theater and parliament style, banquette seating and many more
- ✦ **Technical & conference equipment**  
Equipment for presentations and conferences (flip charts, white boards etc.)
- ✦ **Staff**  
Security and bouncer, bartender and service staff, as well as cloakroom staff
- ✦ **Graphic design services**  
Posters, flyers, banners, wristbands, tickets, give aways and many more

Please note that you are obliged to use the built in event equipment in Technikum, incl. the in-house technicians.



<b>Dimensions</b>	<p>Area GF 324.57 m<sup>2</sup> (hall 253.83 m<sup>2</sup>; foyer 70.74 m<sup>2</sup>) gallery 58.33 m<sup>2</sup></p> <p>Length 22.7 m</p> <p>Width 16.29 m</p> <p>Height 5.20 m-7.90 m</p>
<b>Capacity</b>	<p>Standing GF &amp; 1st floor up to 765 pax</p> <p>Theater seating GF &amp; 1st floor up to 358 pax</p> <p>Parliament style up to 190 pax</p>
<b>Built-in stage</b>	14 x 5 x 1 m
<b>Doors</b>	<p>Width max. 2.53 m</p> <p>Height max. 2.65 m</p>
<b>Work equipment</b>	Fork lift, telescopic work platform and ladders on request
<b>Wi-Fi bandwidth</b>	<p>max. download 20 mbit/s</p> <p>max. upload 20 mbit/s</p>

## Floor area

**Ground floor** 312.16 m<sup>2</sup> **hall** 253.83 m<sup>2</sup>; **foyer** 70.74 m

**First floor** 58.33 m<sup>2</sup>

## Hall

**Length** 22.70 m

**Width** 16.10 m

**Height** 5.20 – 7.90 m

## Gallery

**Height** 2.00 m – 5.00 m

## Stage

**Width** 10.00 m (+ 3.00 m @SR + 2.00 m @SL)

**Depth** 5.00 m

**Height** 1.00 m

**Lights height** 4.20 m

## Door for loading

**Width** 2.53 m

**Height** 2.65 m

**Loading route** 12 m to stage, without stairs,  
with ramp

## Stage

**Light** 1x 63 A CEE // in-house  
 2x 32 A CEE // in-house

**Sound** 1x 63 A CEE // in-house

**Diverse** 1x 63 A CEE // freely available  
 1x 32 A CEE // freely available  
 1x 16 A CEE // freely available  
 2x Schuko 16 A // freely available

## FOH

**Diverse** 2x Schuko 16 A // in-house  
 4x Schuko 16 A // freely available

## Bar

**Divers** 1x 16 A CEE  
 multiple Schuko 16 A sockets

## Catering

**Wall 1** 4x Schuko 16 A sockets

**Wall 2** 2x Schuko 16 A sockets  
 2x 16 A CEE  
 2 x 32 A CEE

**Wall 3** 5x Schuko 16 A sockets  
 2x 16 A CEE  
 2 x 32 A CEE

**Artists' dressing room 1 – 1st floor**

23.59m<sup>2</sup>

**Artists' dressing room 2 – 1st floor**

14.14m<sup>2</sup>

**Artists' dressing room 3 – 1st floor**

8.05m<sup>2</sup>

**Artists' bathroom 1 – 1st floor**

5.02m<sup>2</sup>

*incl. WC and shower*

**Artists' bathroom 2 – 1st floor**

3.82m<sup>2</sup>

*incl. WC and shower*

**Guests' sanitary - basement**

1x WC handicapped accessible

18x WC ladies

10x WC gentlemen

12x WC gentlemen pissoir

**Catering room – ground floor**

27 m<sup>2</sup> - double sink, extractor hood, refrigerator, 1 table with 2 benches, sideboard

Water connection for up to two combi steamers incl. extractor hood

## Fork lift

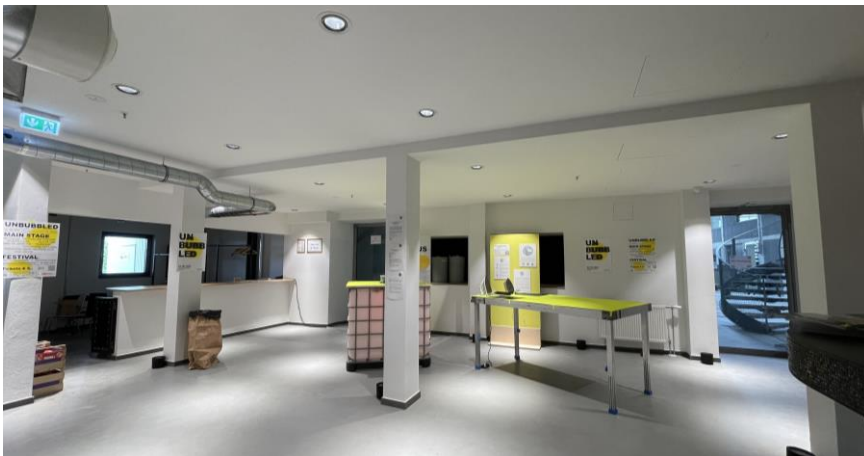
<b>Load capacity</b>	max. 1,860 kg
<b>Operating height</b>	4,950 mm
<b>Drive</b>	electrical

## Telescopic work platform

<b>Operating height</b>	15 m
<b>Drive</b>	electrical



## impressions – views from outside and inside



# impressions – trade fair & fashion show

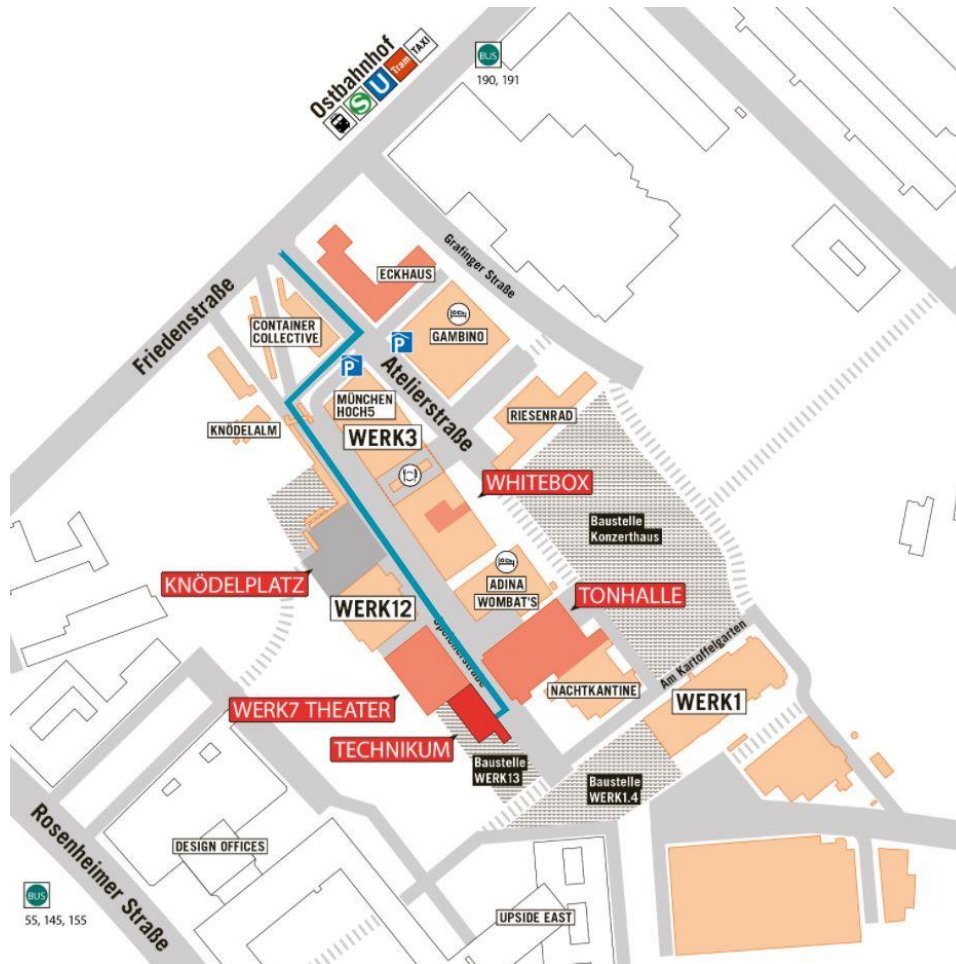


# impressions – evening ceremony & theater seating



# impressions - conference & concert





Werkviertel-Mitte is located directly between Haidhausen and Berg am Laim in the east of Munich.

Thanks to its location right next to the Munich East Train Station the site is optimally connected to regional and national transportation.

Only three stations from to the center of Munich as well as ideal connections to the highways allow for time-saving comfort.

Same applies to the short routes to Messe München, the industrial trade fair grounds, and Munich airport.



# eventfabrik

münchen gmbh

**your event agency  
in werksviertel-mitte**

eventfabrik münchen gmbh atelierstrasse 1 81671 münchen  
Tel: +49 (0)89 628344 – 411 mail [info@eventfabrik-muenchen.de](mailto:info@eventfabrik-muenchen.de) web [eventfabrik-muenchen.de](http://eventfabrik-muenchen.de)